



SEMCOENERGY
GAS COMPANY

PUBLIC AWARENESS EDITION

Connectivity

February 2026 | www.semcoenergygas.com

AFFORDABLE HEATING SOLUTIONS FOR MICHIGAN HOMES

A 2024 report from the University of Michigan's School for Environment and Sustainability identifies natural gas heating as the **most affordable** and **cost-effective** option for Michigan homes.



The report, titled *Heating with Justice: Barriers and Solutions for Affordable Heating in Cold Climates*, highlights the economic advantages of natural gas over other heating methods, including high-efficiency heat pumps. It emphasizes that natural gas is not only widely accessible but also remains the most financially viable choice for Michiganders, making it an essential component of affordable heating solutions in the State.

Natural gas is particularly affordable and efficient when paired with high-efficiency appliances and proper home insulation. To enhance your home's natural gas efficiency, discover SEMCO rebates and more EWR program details on www.semcoewr.com

GAS PIPELINES ARE RELIABLE

SEMCO ENERGY Gas Company utilizes an extensive network of underground pipelines to deliver natural gas to its customers.

The purpose of these pipelines is to transport the natural gas from pipeline supply points to residential, commercial, and industrial customers. SEMCO is committed to ensuring these pipelines are operated safely and reliably.

According to National Transportation Safety Board statistics, pipelines are the **safest method for transporting natural gas**. Pipelines have a safety record unparalleled by any other mode of transporting energy products.



As part of SEMCO's continuing effort to maintain the reliability and integrity of its pipelines, prevent incidents from occurring, and respond to emergencies, SEMCO has developed and maintains good communication networks with state and local emergency officials in Michigan.

SEMCO meets with emergency officials in your area to discuss emergency preparedness and response plans to prepare for various scenarios. SEMCO provides natural gas emergency training and specialized equipment to a majority of emergency response organizations and, when necessary, participates in joint response planning with local, state, and federal emergency responders.

NATURAL GAS SAFETY FACTS



As part of our ongoing education efforts, SEMCO ENERGY Gas Company offers these facts about natural gas safety:

- **Natural gas is colorless, odorless, and tasteless.** To help you recognize the presence of natural gas, an odor similar to rotten eggs is added.
- **Natural gas is lighter than air, rises quickly, and disperses harmlessly in open areas.** However, in an enclosed area, natural gas displaces air at ceiling level and fills the room from the ceiling down. As gas fills an enclosed space, it displaces air and suffocation may occur.
- **Natural gas is not Liquefied Petroleum Gas (LPG).** Liquefied petroleum gases, such as propane, are heavier than air and, unlike natural gas, will collect in low places.
- **Natural gas is not toxic or poisonous.**
- **Natural gas cannot burn without oxygen.** For natural gas to burn, it must be mixed with air and must have an ignition source, such as a pilot light or electric arc from a light switch, electric motor, doorbell, or telephone.
- **Burning natural gas will not explode.** In many cases, it is better to let the natural gas burn than to extinguish the fire. If the fire is extinguished prior to stopping the flow of gas, the gas has the potential to build up to an explosive level.

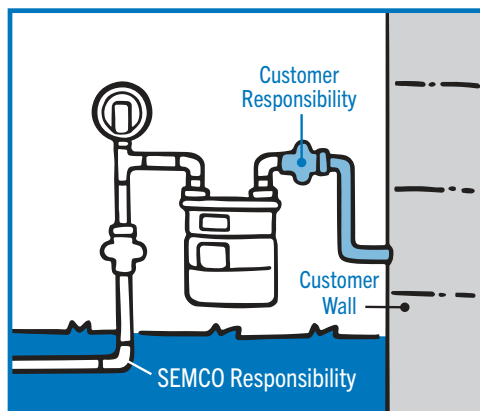
LINE SAFETY AND MAINTENANCE

SEMCO ENERGY Gas Company maintains all gas and service lines that connect our gas distribution system to your home.

You are responsible for “customer-owned lines” or the lines after the meter into your home and to your appliances. This includes underground lines on your property to yard lights, pool and spa heaters, garages, workshops, and similar areas. Please make it a routine to have all gas lines checked for leaks or corrosion.

Here are some signs to look for when you suspect a leak:

- Blowing or hissing sounds
- Brown patches of vegetation on or near a right-of-way
- Bubbling water at a pond, creek, or river
- Gas odor
- Dry spot in moist earth



If you suspect a leak or a safety hazard, leave the area and then call SEMCO immediately at **1-888-GAS-1-GAS (1-888-427-1427)**. A trained technician will check for leaks and shut off your gas supply, if a safety hazard exists.

SEMCO technicians do not perform repair service on customer-owned lines. After you have a qualified heating or plumbing contractor make the necessary repairs to your customer-owned lines, a SEMCO technician will restore your gas service if required.

DAMAGE PREVENTION

Unlike water, natural gas doesn't freeze so the natural gas pipes are not buried as deep as water pipes. The depth of the natural gas pipes may be less than 12 inches due to grade changes, erosion, and frost. Do not assume the depth of a gas facility.

That's why it is critical to call the free service, **MISS DIG (811)**, before any digging is performed. Although gas lines can vary in material and size, the most common pipe in a customer's yard is a yellow or tan 1/2 to 1-inch diameter plastic pipe. This looks very different from the gas pipe used inside your home.



OTHER PIPELINES IN YOUR AREA

For a listing of pipelines in your area, please visit the Pipeline and Hazardous Materials Safety Administration's National Pipeline Mapping System (NPMS) website at <https://www.npms.phmsa.dot.gov>. This website enables the user to view the National Pipeline Mapping System (NPMS) data one county at a time. NPMS data is for reference purposes only. It should never be used as a substitute for contacting a one-call center prior to excavation activities.

Please call 811 before any digging occurs.

GAS LEAK HAZARDS

A natural gas leak may present these hazards:

- Fire
- Explosion
- Asphyxiation (Natural gas displaces oxygen in confined spaces.)

These hazards can be caused by:

- Rupturing, nicking, or puncturing a pipeline
- Uncontrolled escaping gas or fuel
- Extreme natural events such as floods, tornadoes, and earthquakes
- Heavy ice on outside meters or other gas pipelines
- Fire or explosion near or directly involving a pipeline facility
- Collapsed buildings that break or damage pipelines
- Civil disturbances such as riots
- Water main breaks that weaken roadways and pavement damaging pipelines
- Under-pressure or over-pressure in the pipeline system
- Equipment failure
- Human error

HOW TO GET ADDITIONAL INFORMATION

CUSTOMER SERVICE

1-800-624-2019 or
customer.service@semcoenergy.com

PIPELINE SAFETY

www.semcoenergygas.com/pipeline-safety-information/

GAS LEAKS AND OTHER EMERGENCIES

1-888-GAS-1-GAS (1-888-427-1427)

www.semcoenergygas.com

